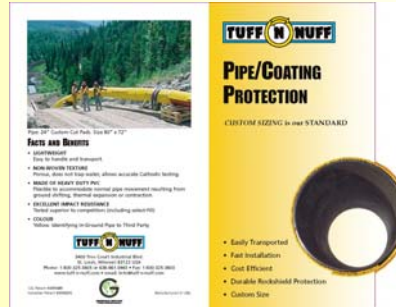




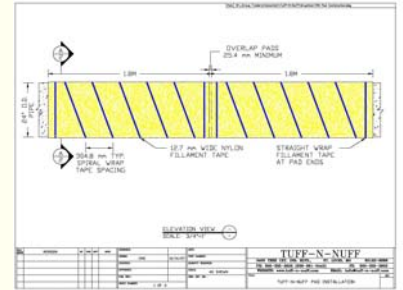
Submittal Package Tutorial

Tuff-N-Nuff has created a unique tool for you to quickly view or email submittal package documents on line. Typical documents found in the **Submittal Package** include:

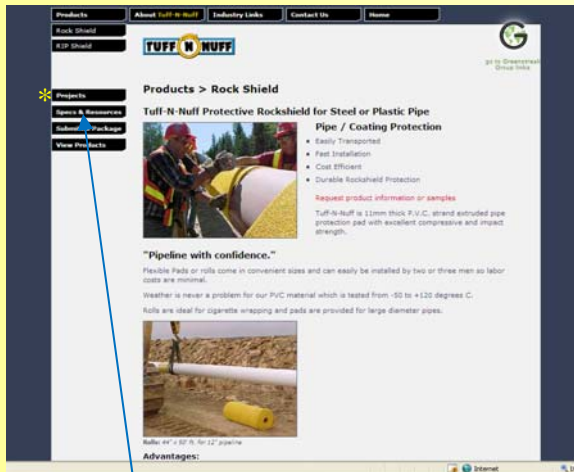
- Brochures
- Testing Data
- Specifications
- Installation Guides
- Material Safety Data Sheets
- CAD drawings



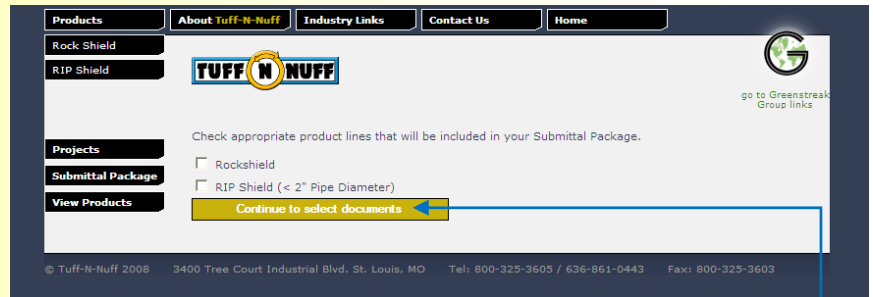
Brochures



CAD Drawings (.dwg and .pdf)



Submittal Package Landing Page
You may select one or more products from this page



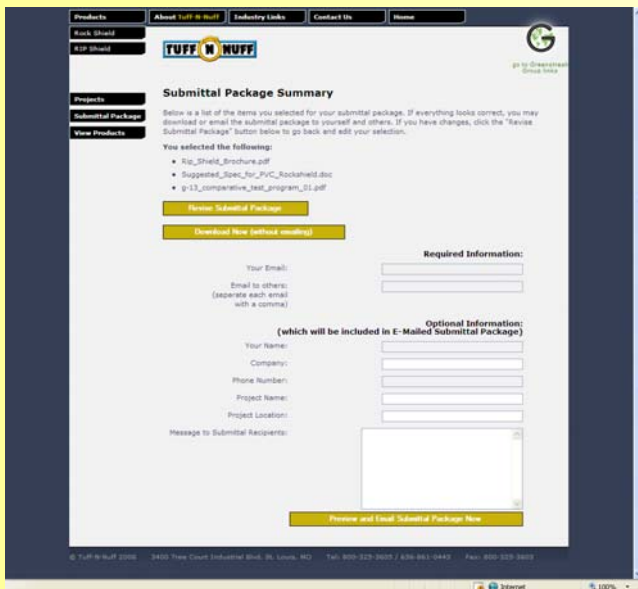
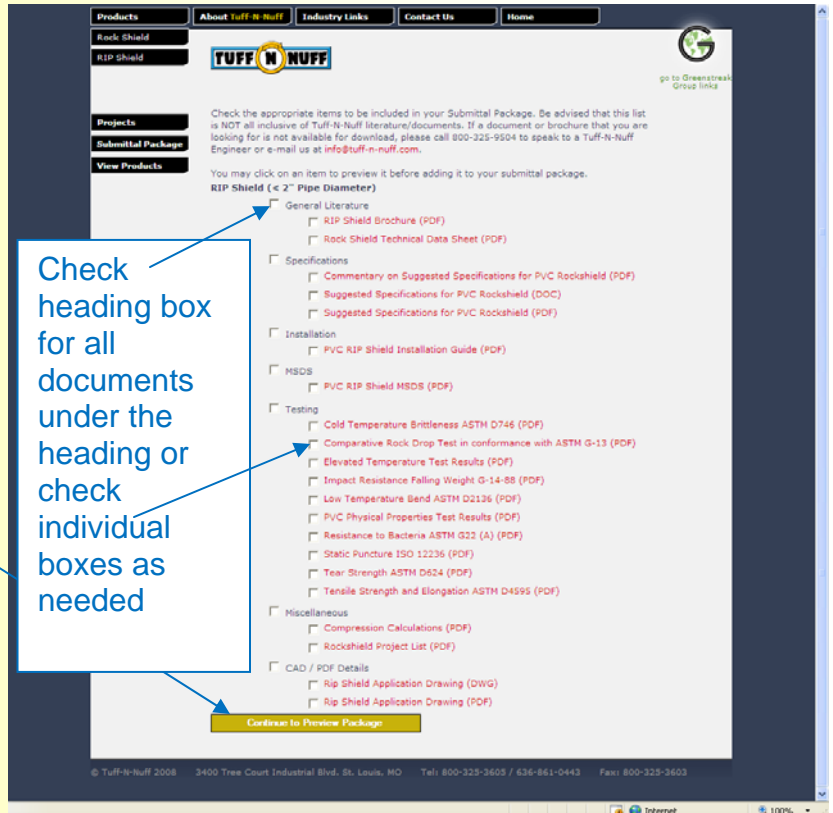
The **Submittal Package** link is found throughout the site in the navigation buttons located on the lower left hand side of the pages (see note about **Specs & Resources** button). This link takes you to a selection page for the all product categories where one or more products can be selected. Once the product or products have been selected, click the button located at the bottom of the page to **Continue to Select Documents**.

The **Specs & Resources** button is found on specific product pages. This link opens a page where you can view and print submittal information for products specific to the page you are viewing. For instance, if you are viewing Rock Shield, the Specs & Resources link will display only information for Rock Shield. If you wish to download or email documents pertaining to Rock Shield and RIP Shield, you will want to use the **Submittal Package** tool.

Submittal Package Tutorial

You are now able to select the type of information you need in defined sections. You may choose all information in a section by selecting the box next to the heading or you can choose one or more specific documents. You may select from multiple sections and multiple documents on this page. After making your selection, scroll to the bottom of the page and [Continue to Preview Package](#).

Your document selection will now appear and you are given the option to [Revise](#), [Download](#), or [Email](#) your selection to yourself and other recipients.



Please call 800-325-3605
if you have any questions regarding

www.TUFF-N-NUFF.com

Link to [Submittal Package](#)